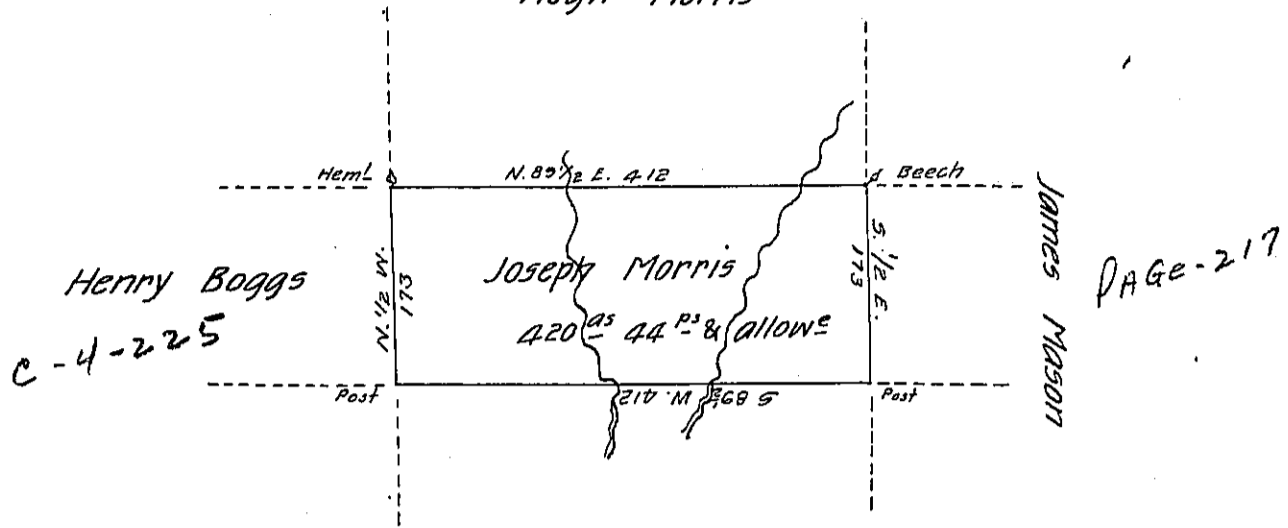


PAGE-218  
Hugh Morris



Peter White  
A-51-158

A Draught of a Tract of Land called \_\_\_\_\_ situate  
 in the County of Luzerne adjoining Peter White & others, surveyed the  
 19<sup>th</sup> day of Septem<sup>r</sup> 1792, for Joseph Morris in pursuance of a War-  
 rant bearing date the 3<sup>d</sup> day of April 1792. Containing Four hundred  
 twenty acres & forty four perches & the allowance of six p. Cent.  
 Anty. Crothers D.S.

To Dan<sup>l</sup>. Brodhead Esq<sup>r</sup> }  
 Surveyor General }

IN TESTIMONY that the above is a copy of the original remaining on file in  
 the Department of Internal Affairs of Pennsylvania, made  
 conformably to an Act of Assembly approved the 16th day of  
 February, 1833, I have hereunto set my Hand and caused  
 the Seal of said Department to be affixed at Harrisburg,  
 this sixth day of February 1906

*Loach D. Brown*  
 Secretary of Internal Affairs.